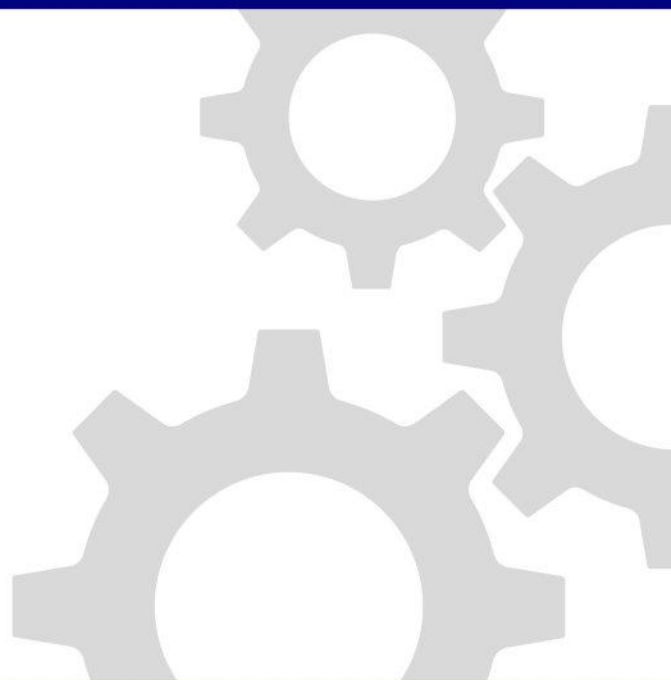




AMS-Power & Industrial Engineering Pvt. Ltd.



## CONCEPT TO COMMISSIONING

A large industrial facility, possibly a refinery or power plant, with several tall distillation columns and complex piping. The scene is set against a sunset sky with orange and yellow hues. In the foreground, there is a body of water with some greenery and a small boat.

A Trusted Name  
in Industrial EPC Services





**Since 1967**

***One Construction Company  
Three Generations of Engineers  
Defining Quality***

**Achieving Excellence &  
Delivering Value to our  
Clients**

***From Karnaphuli Paper Mills, Bangladesh  
To 1320 MW Coal Fired Power Plant, Bin Qasim, Karachi***

**AMS-Power & Industrial  
Engineering Private Limited**

***Leaders in Pakistan's Power & Industrial Construction.***



# Introduction



AMS-Power is an EPC (Engineering, Procurement and Construction) specialized, Plant Construction & Industrial Fabrication Company that provides broad-based Mechanical, Electrical, Instrumentation, and Civil services to all types of industries.

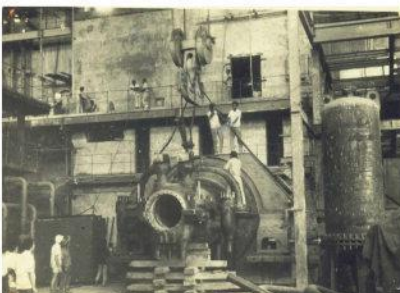
Focused on fast-track execution of medium and large scale projects, we are providing world class solutions to our customers across all industrial segments like Power, Energy, Oil & Gas, Cement, Food, Sugar, Process, Chemical etc.

We provide complete solutions for all your industrial projects' needs, from feasibility studies, detailed engineering to sourcing, execution, and commissioning.

## History

**1962**

The Chief Executive of the Company, **Mr. ABDUL MUN-IM SHAHID** started his career with **Associated Electrical Industries Pakistan Ltd.**, a British Company in Pakistan, working directly on major Power Generation and various Industrial Plants.



**1972**

The company continued to operate in Pakistan, renamed as **Associated Engineering Concern (A.E.C.) Private Limited**

**1969**

He joined hands with **Bhangra Engineering Corporation** a leading contractor in Bangladesh, and executed the completion of a large size **Thermal Power Station at Ghorasal, Dacca**, with his active contribution.





## CEO's Message

Equipped with five decades of experience and a time tested management team, AMS-Power continues to forge ahead in the construction & engineering landscape of Pakistan. We are also looking forward to the forthcoming international expansion projects, focusing especially on the developing regions.

Going forward, 'Innovation' is the cornerstone of company's strategy. Together with our international partners, we will continue to introduce latest technology to the local market to modernize the Pakistani construction & engineering industry for the benefit of all stakeholders.

AMS-Power remains committed to achieving the highest standards in progress, quality, and safety for all our Clients, from Concept to Commissioning.



“  
We start with  
Performance  
and end at  
Excellence  
”

### 1975

The organization had incorporated as a **Private Limited Company** and the Chief Executive acquired contracts of major projects in Mechanical, Electrical and Automation fields.

### 1996

The company was renamed as **AMS-Power**.



### 1996 to date

During this time, the company worked as the main Pakistani contractor for prominent multinationals in the construction industry such as Wärtsilä, Deutsche Babcock Energie, Snamprogetti, Aquater, Kellogg International, Foster Wheeler Energy Ltd., Marubeni, CWEH China, Clough Engineering, Power China, Sepco-III



## EPC Services

AMS-Power has vast experience in successful execution of solid as well as liquid fuel thermal power plants for both public and private sector organizations. The scope of our services includes:

- Engineering, Procurement and Construction
- Sourcing of HFO Engines
- Sourcing of Steam / Gas turbines and Boilers
- Sourcing of BOP of thermal power plants
- Construction activities for all disciplines
- Operation & Maintenance

We have the financial muscle as well as experienced human resource to execute EPC projects for small to medium size power plants in a timely and quality manner.

### OUR VISION

"To be a global leader in design, innovation, and invention of emerging industrial technologies that stand to transform the world for the better"

### OUR MISSION

"To become a leading services provider for industrial EPC services in Asia & Middle East"

### OUR VALUES

Integrity  
Honesty  
Respect  
Quality

## Basic & Detailed Engineering

### Basic Engineering

Process Simulation  
Heat & Material Balance  
Process Flow Diagrams (PFD's)  
Piping & Instrumentation Diagrams (P&ID's)  
Utility & Effluent summary  
Hydraulic Calculations  
Equipment Sizing  
Process Data Sheets  
Cause & Effect data sheets

### Detailed Engineering

P&ID's  
Utility Distribution Diagrams  
Fire Protection Systems  
Operation Manuals  
As-built drawings  
Work Procedures





## Civil

Steel and concrete structures  
Pipe racks and elevated structures  
Equipment foundations  
Pile foundations  
Tank foundations  
Turbine house and boiler house structure  
Underground services

## Mechanical Design

Stationary Equipment  
Steel Equipment  
Rotary Equipment  
Storage Tanks and silos

## Piping Design

Plot plans  
Conceptual piping studies and layouts  
Piping Plans  
Isometrics  
Project specifications/procedures  
Bill of materials / Bill of quantities

## Electrical Design

Area classification drawings  
Single line drawings  
Schematic and wiring diagrams  
Fire alarm systems

## Instrumentation Design

Instrumentation specifications and data sheets  
Logic/loop diagram  
Termination diagrams  
Hook up and installation drawings  
Control room layout and arrangement drawings  
Panel specifications and arrangement drawings

## Procurement



Driven by international best practices, at AMS-Power we procure only the best materials and equipment according to the specifications and delivery schedule.

With our expertise in handling procurement of large scale projects, we follow the due process as given below:

- Vendor Sourcing and Evaluation
- Procurement specifications and material requisitions
- Bid evaluations
- Vendor documentation review
- Draft Agreements and Purchase orders
- Expediting
- Factory acceptance testing & inspections
- Documentation for opening LC's



Modern Fleet of Company Owned  
Construction Plant & Equipment



## Civil / Structure



Having the Civil expertise means that AMS-Power can take care of your construction needs from the laying of foundation stone to the start of production. Our expertise extends from earth moving works to civil project finishes. The scope of our civil works related services includes:

- Industrial Construction works
- Building Construction works (Structure, brick masonry, concreting, flooring, doors, windows, ventilators, finishing, water proofing, insulation & painting etc.)
- Foundations of Plant Machinery
- Road works
- Excavation works
- Trenches for Electrical & instruments cabling & water drainage



## Mechanical

AMS-Power's construction services for mechanical works are diverse and comprehensive. In many ways, mechanical works are the foundational building block of the company from its early days. Supported by its own fabrication facilities, AMS-Power undertakes mechanical engineering works such as:

- Process & Petrochemical Industries Equipment, inclusive of all types of rotary equipment installation involving high degree of accuracy & precision work i.e. Hydal Turbine Generators, Steam Turbo-generators, Gas Turbine Generators, Diesel/Furnace Oil Engine Generators, Heavy Duty Compressors & large size Pumps etc
- Steam Generating Plants (Conventional types Boilers as well as Heat Recovery Steam Generators - H.R.S.G) with specific reference to assembly and erection of Pressure Parts involving 100% Radiography of welding work
- Pipe Fabrication & Erection, high & low pressure (carbon, stainless & alloy steel) piping of Power & Process Industry
- Storage Tanks, Pressure Vessels and Steel Structure including Pipe Racks & Supports Fabrication and Erection.
- All types of relevant Field Tests as well as Providing Assistance for Plant Commissioning

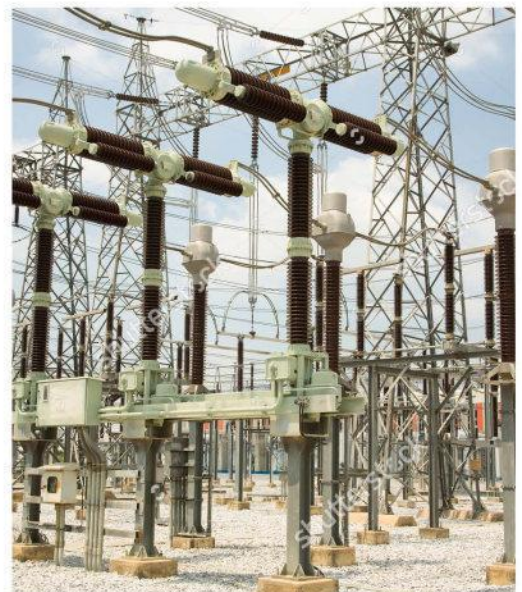


“50+ Successful Projects in the Power Sector; 100s of Projects in Other Industrial Sectors”

## Electrical

Electrical design and construction works is another major area of expertise at AMS-Power right since the inception of the company. AMS-Power carries out electrical works for both industrial and buildings including LV/HV systems. Fields where AMS-Power has extensive experience are:

- Power Generation System-Complete Installation
- Grid Stations & Sub-stations Installation
- High & Low Tension Equipment i.e. Power Transformers, Switchgears, Oil, SF6 Gas & Vacuum & Air Blast Circuit
- Breakers and Power Distribution Panels
- High, Medium & Low Tension Power Cabling
- Control Panels, PLCs & Control Cabling
- Internal and External Plant Electrification (Lighting work)
- All types of relevant Tests as well as Commissioning Assistance







“

Great Safety Record:  
More than One Million  
Safe Man Hours During  
Last Three Years Alone

”

## Instrumentation, Automation & Control

Our Instrumentation & Control services cover a wide array of activities like: maintenance, overhauling, testing, calibration and certification of all types of instruments, including safety, ESD, and control valves; PLC's DCS / SCADA Systems, and installation and pre-commissioning of turnkey projects.



- Pre-calibration of Field & Control Room Instruments
- Installation of all types of Pneumatic, Electronic and Electrical Field Instruments of Power & Process Industrial Plants
- Field Instruments Hook-ups
- Control Panels - Centralized Instrumentation
- Control Cabling
- Loop Checking & Testing of complete Instrumentation System as well as Commissioning Assistance



# Fabrication Work Services

Fabrication is another area of expertise at AMS-Power, and has a long history of successfully executed projects. AMS-Power has a state of the art 90,985 Sft. fabrication facility and warehouse for fabrication materials at 26 km Multan Road Lahore, near Maraka bus stop. Some of the equipment, structure etc. that are fabricated at this location are:

## Pressure Vessels

The tanks and pressure vessels that we design and fabricate cover the full spectrum of applications, sizes, types, metals and frequency of use.

## Shop and Site Built Tanks

AMS-Power designs and fabricates customized tanks and other non-pressure vessels in carbon steel, stainless steel, alloy metals, and aluminum for specific one-time or repetitive applications to meet the unique client requirements of applications, sizes, and types.

## Piping

Whether you need a one-time solution or an ongoing application, our capabilities to design and fabricate customized piping systems are as broad and varied as our customers' industries and needs. Examples include shell and tube heat exchangers, power boiler systems, pressure vessel/heat exchangers, food plant installations, multi skid systems for offshore oil rigs, and much more.

## General Fabrication

AMS-Power has extensive experience in a wide array of general fabrication works including:

- Structural steel components
- Industrial containers
- Ladders, handrails
- Walkways
- Platforms
- Other specialized needs as required by our customers



“We have a state-of-the-art 20-kanal fabrication facility and warehouse”



## MEP Services



AMS-Power has also evolved as one of the most trusted and respected entity in providing services such as HVAC, Electrical, Plumbing and Fire Fighting installations for commercial and industrial buildings. We are recognized for providing one stop MEP solution for today's most complex structures. AMS-Power's MEP team comprises of highly professional engineers and field staff to meet standards of installing equipment, pipelines, ducts etc. in the confined spaces of buildings, structures etc. Following are the key areas of our services:

- Mechanical and Electrical Systems
- Plumbing and Drainage Works
- Heating, Ventilation & Air Conditioning (HVAC) Systems
- Fire Fighting & Protection Systems
- Piping & Ducting Works

## Maintenance Services



AMS-Power provides Plant Maintenance Services to the valued clients in order to keep-up better performance of their plants. For this purpose, the company is maintaining a well-qualified team of specialists, who are experienced and competent to tackle the intricate problems related to plant maintenance, in order to improve their working condition to function at a degree not less than new plant machinery.

## QA /QC

### Quality Control

AMS-Power is a quality-conscious company that prides itself in providing & maintaining top quality engineering & construction services in all of its projects to date. We are an ISO 9001-2008 certified company and our track record is a testament to our top management's commitment to Quality. All the products are made and services rendered as per client's specifications & codes.





## Quality Policy

AMS-Power's ISO 9001-2008 defines our Quality Policy as under:

"AMS-Power & Industrial Engineering Private Limited is a quality conscious company in design & engineering, fabrication, manufacturing and construction works, possessing comprehensive awareness about quality oriented work execution.

The management of the company is committed to provide highest quality engineering services to its valued customers through continuous improvement measures in all areas of its Quality Control Management System."

## HSE

AMS-Power is an OHSAS 18001:2007 certified company that is committed to maintaining highest standards of HSE at all its facilities, projects, and works.

## Company HSE Policy:

AMS-Power's OHSAS Certification states the HSE policy as:

- We are committed to keep our workplaces free from hazards; risks, injury and ill health at all times for our valuable employees.
- We constantly improve our health and safety management system through enhancements that comply with applicable Health, Safety and Environment Laws and Regulations of our country.
- All of our employees are responsible for Occupational Health, Safety & Environmental matters under their control and are held accountable for any impact of their actions on Occupational Health, Safety & Environment.
- Our senior management is responsible for ensuring awareness and the relevant training of company personnel in this regard, so that the employees can ensure all time compliance with the Occupational Health, Safety and Environmental program.
- We are committed to communicate this policy both internally, externally in order to ensure that it is available to every concerned party.

# Clients We have Served

WAPDA

KESC

Pakistan Steel

Nishat Power Ltd.

Nishat Hotels & Properties Ltd.

Pakarab Fertilizers Ltd.

Fauji Fertilizer Corporation

State Cement Corporation

Pakland Cement Ltd.

ICI Polyester

Rupali Polyester

Pakistan Petroleum Ltd.

Oil & Gas Development Corporation

Wärtsilä

Deutsche Babcock Energie

Snamprogetti

Aquater

Kellog International

Foster Wheeler Energy Ltd.

Marubeni

CWEH China

Clough Engineering

Power China

Sepco-III





